



MUNICIPALITY OF THE MONTH

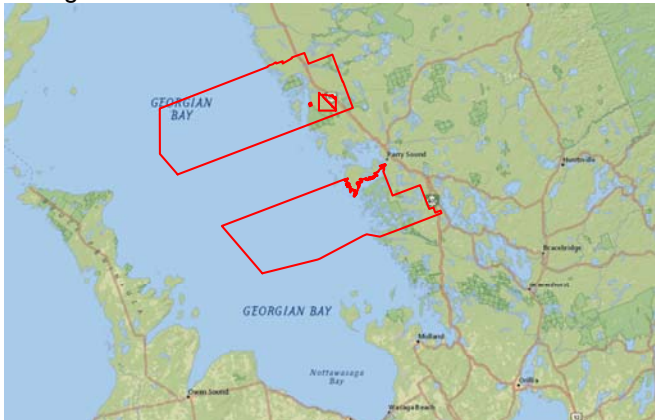


November, 2016

The Township of The Archipelago

Where is it?

The Township of The Archipelago is located in the District of Parry Sound. It has a geographic area of 233 square miles and a permanent population of approximately 592, but the seasonal population soars to over 13,000 as cottagers flock to the Georgian Bay shoreline and islands, and to the many inland lakes, during the summer months.



What are the biggest attractions?

The natural environment and the pristine beauty of the Georgian Bay shoreline are essential elements that draw visitors to the Township. Massasauga Provincial Park, located within the Township, stretches from the town of Parry Sound south to the Moon River. The park has an area of over 50 square miles and encompasses hundreds of islands on the coast of Georgian Bay, as well as many inland lakes including Clear Lake and Spider Lake. Classified as a "Natural Environment" park, it contains no roads, so camping is limited to interior sites. The campsites on the bay can be reached by motor boat whereas those on the lakes are typically reached by non-motorized craft such as canoes or kayaks. The park also has mooring anchors for boats to overnight in some inlets on Georgian Bay.



The 135 interior campsites in Massasauga Provincial Park can only be reached by water

What makes the municipality unique?

The Township of The Archipelago is somewhat unique in that it has two distinct sections that are geographically separated, with the Town of Parry Sound, the Township of Carling and Wasauksing First Nation lying between them. On January 1, 1980, the townships of Georgian Bay South Archipelago and Georgian Bay North Archipelago were formed out of unincorporated geographic townships from the Parry Sound District, primarily in order to provide proper planning in the islands and waterways of the area. The Township of The Archipelago was formed on April 1, 1980, when the townships of Georgian Bay South Archipelago and Georgian Bay North Archipelago merged.



The Township of The Archipelago is actively engaged in encouraging proper stewardship of shoreline areas

What are the most common issues faced by the Committee of Adjustment?

The Committee of Adjustment for the Township of The Archipelago is made up of the ten elected Township Councillors and hears minor variance applications only, primarily related to waterfront developments such as cottages, boathouses and docks.

Consents are heard by The Archipelago Area Planning Board, which has jurisdiction to grant consents within the Township of The Archipelago itself, and also in some of the "unorganized" Townships in Parry Sound District (being Townships without their own municipal government). The Planning Board is made up of six elected Township Councillors and two representatives appointed by the Province to represent the interests of the unincorporated Townships.

* * *

OACA would like to thank Jane Nawroth, Planning Assistant for the Township of The Archipelago and Secretary-Treasurer of the Planning Board, for her assistance with this article. More information about the Township of The Archipelago can be found on the Township's website at www.thearchipelago.on.ca